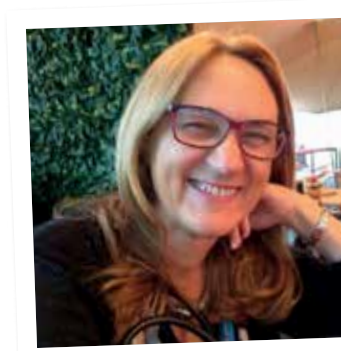




Peru, Cusco Province

Welcome



Travel has been my life for 20 years. St Augustine's famous quote remains as true to me today as it was when I first set up 2by2 Holidays – "the world is a book and those who do not travel, read only one page".

My first love was Africa, the place of my birth. Its remarkable wildlife and cultures continue to captivate me today. A recent visit to the gorillas of Uganda has starkly reminded me just how fragile the survival of so many endangered species remains. And reinforced my belief that travel must always have conservation at its heart.

In recent years I have discovered the joys of travel in the Indian subcontinent and Latin America. The iconic sites and cultures here are no less enthralling. And everywhere wildlife adapts and survives, from harsh barren deserts to cool mountain cloud forests and tropical wetlands.

My enthusiasm burns as brightly as ever and I continue to be as involved in every aspect of the business as I always have been, backed up by our superb travel team. I'm particularly thrilled that so many of our customers return time after time.

I do hope you find our latest brochure inspiring and we all look forward to hearing from you.

Hambe Kahle – Travel Safely

Claire Farley

Claire Farley
Managing Director

Telephone 01582 766 122
Email claire@2by2holidays.co.uk
www.2by2holidays.co.uk



Bwindi

Uganda

With its astonishing range of primates (over 10 different species), Uganda is a premier wildlife destination for the discerning safari aficionado, with Murchison Falls offering some of the best game viewing in all of Africa. It also has over 1,000 bird species.

Dubbed the “Pearl of Africa” by Winston Churchill, Uganda is a lush and scenic country. Vast Lake Victoria, the largest in Africa, forms its southern border whilst Lake Albert and Lake Edward in the Great Rift Valley define its western limit. Uganda boasts the highest concentration of primates in the whole of Africa, including 50% of the world’s population of endangered Mountain gorillas. These are found in family groups living on the slopes of Bwindi Impenetrable Forest and

Mgahinga Gorilla National Park in the southwest of the country, near the border with Rwanda.

Tracking a family of gorillas and their Silverback males is a life-changing experience, but you do need to be reasonably mobile to trek through these steep equatorial rainforests in search of them, as they are constantly moving. Expect to walk 1 to 4 hours each way, in steep and sometimes muddy conditions. Once you reach a gorilla family all the

effort of the trek will be forgotten, as the encounter is almost without fail a very moving one.

You must be over 15 years to track gorillas and not have any colds or infections, as they have little immunity to human germs. It’s essential to wear good walking boots, long trousers and gloves for protection, as you scramble through the forest. Consider paying a porter to carry your backpack as you need to carry 2-litres of water, a packed lunch, rain gear



Murchison Falls National Park

Coming face-to-face with the Mountain gorillas of Bwindi is an experience that is at the top of many people’s travel wish list. It doesn’t disappoint!

and light fleece, as early mornings in the rainforest can be chilly. A walking stick will be provided to help with the steep ascents, if you don’t bring your own.

The gorillas are habituated and are remarkably relaxed about the presence of humans. Important rules should be observed however, such as remaining 7 metres from any gorilla – although some of the younger ones may let their curiosity get the better of them! You will have strictly one hour to observe the behaviour of the gorillas, a rare privilege indeed.

Murchison Falls National Park is situated in the northwest of the country, on the shores of Lake Albert, and is divided into two sections by the mighty

Nile River that flows through it. This is the premier wildlife reserve in Uganda and one of the finest in the world. It is home to predators such as lion, hyena and leopard as well as huge herds of elephant, buffalo, giraffe, Jackson’s hartebeest, warthog, baboon and waterbuck – all easily seen on the open terrain. Observing these rolling hills alive with the movement of thousands of Uganda kob (an antelope similar to an impala) is truly unforgettable.

A boat ride to the base of the Murchison Falls is a must, followed by a hike to the top of the falls. Here the upper Nile dramatically plunges 40 metres through a narrow gorge, before widening into a fast flowing river. Birdlife is abundant and you will see many pied kingfisher fishing and nesting along the river banks, as well as numerous pods of hippo.

Murchison Falls is most easily accessed by light aircraft from Entebbe. However you can also travel overland with your own driver/guide, stopping along the way at Ziwa Rhino Sanctuary, which is home to the only wild rhino in Uganda.

Chimpanzees are our closest animal relatives, sharing 98% of our DNA, so observing their behaviour in the wild is another thrilling Ugandan primate experience. Chimps spend much of their time nesting high in the forest canopy, but as the day warms up they drop to the cool forest floor to feed and this is where the most exciting encounters occur – as chimps are more boisterous than their larger gorilla cousins.

Seeing the chimps is never guaranteed, but your best opportunity is in Kibale Rainforest, which has a success rate of over 90% and relatively easy terrain.



Gorillas Safari

- DAY 1** Arrive in Entebbe
- DAYS 2/3** Fly to game-rich Murchison Falls National Park, with land based game viewing & boat ride along the River Nile
- DAYS 4/5** Fly to Bwindi Impenetrable Forest to track endangered mountain gorillas – an experience of a lifetime!
- DAYS 6/7** Fly back to Entebbe & relax on shores of Lake Victoria
- DAY 8** Depart from Entebbe

From £4,495 per person sharing including flights, mid season



These are example itineraries– see page 5 for key. For more ideas, information and prices please call us on **01582 766 122** or visit www.2by2holidays.co.uk



Chimpanzee, Kibale



Ishasha

Almost 1,500 chimps live in Kibale, as well as 12 other primate species including the Black-and-white colobus, Red colobus, Red-tailed monkey, Grey-cheeked mangabey, Blue monkey, Bush baby, Vervet monkey, L' Hoest's monkey and Olive baboon. The forest is rich in birdlife, with over 300 recorded species. Chimps can also be tracked in Budonga Forest, Kyambura Gorge and Semuliki National Park. Expect to walk up to 3 hours, as the chimps move very quickly through the trees.

Queen Elizabeth National Park is Uganda's most visited game reserve, due to its proximity to the gorillas and relatively easy access from the capital of Kampala. It is bordered by Lake Edward and the Ishasha River to the west, with the Kasinga Channel dividing the park as it flows from Lake George in the northeast. The highlight of any visit is a boat ride on the channel where you will see thousands of buffalo, hippo and elephant cooling off along its shores. The channel is also a magnet for great flocks of water birds which gather to fish – including a variety of pelican, eagle, vulture, kingfisher, stork, spoonbill, cormorant, ibis and many others.

Almost 100 mammals can be found here, including 20 predators and many antelope including the Uganda kob, bushbuck, topi and semi-aquatic sitatunga. During the dry season most of the wildlife migrates from the Kasenyi Plains to the lakes and rivers, but patience will be rewarded with sightings of lion, hyena and maybe even leopard. The Ishasha Plains in the southwest of the park are renowned for their tree-climbing lions.

Lake Mburo National Park is the usual stopover for those travelling from Ishasha

A gorilla safari in Uganda is not complete without viewing the chimpanzees of Kibale Rainforest, the river-based wildlife of Queen Elizabeth National Park and the tree-climbing lions of Ishasha.



Queen Elizabeth National Park

or Bwindi with a driver/guide and offers excellent plains game viewing. It is the best place in the country to see eland, zebra, topi and impala. You can also enjoy horse riding and walking safaris here.

Less visited, the rugged and semi-arid savanna of Kidepo Valley National Park in the far northeast of the country offers another big game fly-in experience.

Jinja is the place to go for adrenalin activities. Here the Nile River has its source and its thundering rapids, up to grade 5, offer some of the safest white water rafting in the whole world, as there are no submerged rocks, hippos or crocodiles. Afterwards visit the Chimpanzee Sanctuary on Ngama Island and relax on the shores of Lake Victoria, with over 3,000 islands.



Pearl of Africa

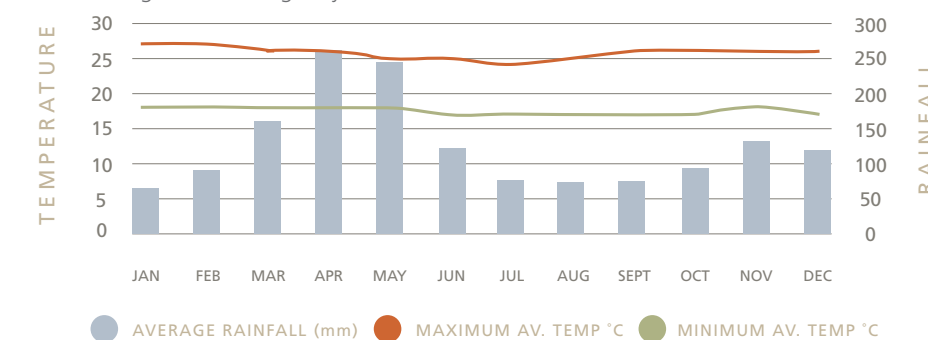
- DAY 1** Arrive in Entebbe
 - DAYS 2/3** Fly to Murchison Falls, with game viewing & boat cruise on the Nile River
 - DAYS 4/6** Fly to Kibale Rainforest, for exciting chimp tracking
 - DAYS 7/8** Drive to Queen Elizabeth Park, with game viewing by boat & on land
 - DAY 9** Visit Ishasha Plains to search for tree-climbing lions
 - DAYS 10/12** Drive to Bwindi Impenetrable Forest for gorilla trekking – an unforgettable experience!
 - DAYS 13/14** Travel to Kigali/Depart
- From £6,695 per person sharing including flights, mid season



These are example itineraries– see page 5 for key. For more ideas, information and prices please call us on **01582 766 122** or visit www.2by2holidays.co.uk

When to go

Uganda straddles the equator and has a warm equatorial climate, with some rainfall all year round. The best time to visit is during one of the two drier seasons – June to August, which is peak season as it is cooler, or December to February when it is much hotter. October and November should be avoided as heavy downpours make road travel and gorilla trekking very difficult.





Book with confidence

We have ATOL certification and membership of the Association of Tour Operators (AITO).

Booking your holiday

When you are ready to book, we will guide you through the process. In all our dealings we aim to be transparent and encourage you to read our terms and conditions thoroughly. These are on our website at www.2by2holidays.co.uk. Please do contact us if anything is unclear.

Financial Protection

Through our membership of ATOL (9025) and our Tour Operator Insurance, your holiday is fully financially protected wherever in the world you live, regardless of whether you book land-only arrangements or a complete holiday package with flights.

AITO Quality Charter

AITO is the Association for independent and specialist holiday companies. Our member companies, usually owner-managed, strive to create overseas holidays with high levels of professionalism and a shared concern for quality and personal service. The Association encourages the highest standards in all aspects of tour operating.

Exclusive Membership

AITO sets criteria regarding ownership, finance and quality which must be satisfied before new companies are admitted to membership. All members are required to adhere to a Code of Business Practice which encourages high operational standards and conduct.

Financial Security

An AITO member is required to arrange financial protection for all holidays and other arrangements (including accommodation only) booked by customers with the member under the AITO logo. This financial protection applies to customers who are resident in the UK at the time of booking and to most overseas customers who have booked directly with the member. In doing so, the member must comply with UK Government regulations. Members are required to submit details of their financial protection arrangements to AITO on a regular basis.

Accurate brochures and websites

All members do their utmost to ensure that all their brochures and other publications, print or electronic, clearly and accurately describe the holidays and services offered.

Professional service and continual improvements

All members are committed to high standards of service and believe in regular and thorough training of employees. Members continually seek to review and improve their holidays. They listen to their customers and always welcome suggestions for improving standards.

Monitoring standards

AITO endeavours to monitor quality standards regularly. All customers should receive a post-holiday questionnaire from their tour operator, the results of which are scrutinised by the Association.

Sustainable tourism

Our members acknowledge the importance of AITOs Sustainable Tourism ethos, which recognises the social, economic and environmental responsibilities of tour operating.

Customer relations

All members endeavour to deal swiftly and fairly with any issues their customers may raise. In the unlikely event that a dispute between an AITO member and a customer cannot be settled amicably, either party can call on an arbitration service to bring the matter to a speedy and acceptable conclusion.

To contact AITO call 020 8744 9280 or visit their website www.aito.com

2by2 Holidays

2 Place Farm, off Mount Road
Wheathampstead, Herts, AL4 8SB
01582 766122
info@2by2holidays.co.uk
www.2by2holidays.co.uk



Copyright and accuracy

All efforts have been made to ensure that the information in this brochure is both helpful and correct. However the intention of our brochure is to suggest ideas and inspire and 2by2 Holidays cannot be held responsible for any inaccuracies. The content of our brochure is subject to copyright and photos may not be reproduced without the owners' written permission.

Photographic credits

We'd like to thank all the lodges, hotels and tourist boards who have let us use their wonderful images. We would like to give special thanks to Alamy, Ariadne Van Zandbergen – Africa Image Library, Dale R Morris, iStock, Jaco Powell, John Warburton Lee – AWL Images, Shutterstock Photo Library and Wilderness Safaris photographers – Dana Allen, Mike Myers and Olwen Evans.